

Transfection SK-MEL-28, C2C12, MCF-7 and 293T cell lines with Metafectene

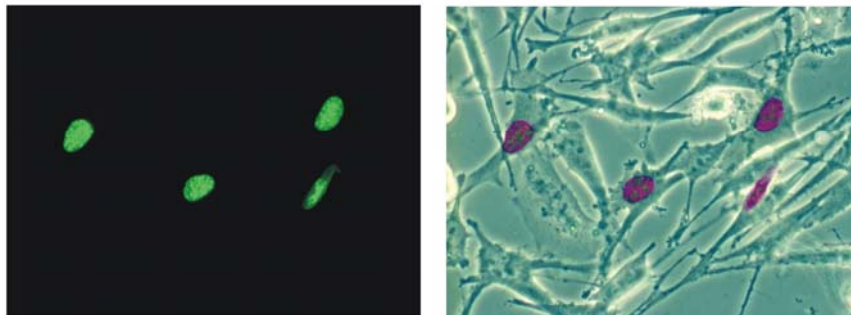
Jan Brocher

Universität of Würzburg, Dept. of Cell- and Developmental Biology, Germany

The SK-MEL-28 cells were plated in equal amounts in six 35 mm dishes and transfected with METAFECTENE after an overnight incubation at 37°C, 5% CO₂. The confluency was about 50% at the day of transfection. The transfection was carried out like described in the manual. The Incubation time of the DNA-lipid complex formation was 15 minutes at RT. After addition of the complex to the cells, they were incubated at 37°C, 5% CO₂ overnight. As DNA for transfection the plasmid vector pHMGA1a-GFP was used.

Amount of DNA [μ g] pHMGA1a-GFP	Amount of METAFECTENE [μ l]
1 μ g	10 μ l
3 μ g	10 μ l
2 μ g	5 μ l
2 μ g	20 μ l
2 μ g	30 μ l

SK-MEL-28 cell line transfected with Metafectene : 2 μ g DNA + 5 μ l METAFECTENE overnight



Conclusion:

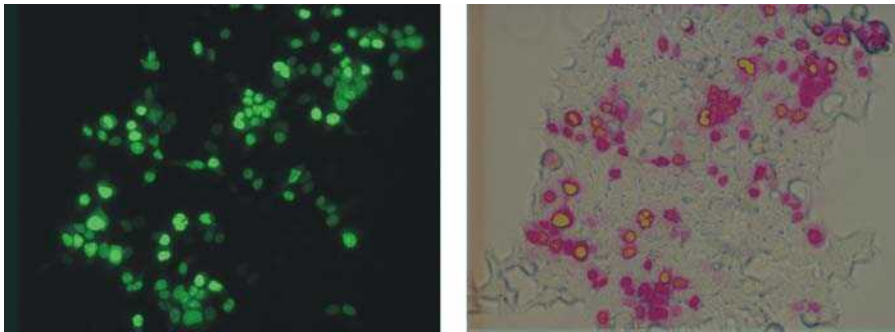
SK-MEL-28 cells:

The transfection rate showed a slight increase when using 3 μ g instead of 1 μ g DNA. But there was not much difference between the approaches using 5 μ l, 20 μ l or 30 μ l METAFECTENE. All in all we got a transfection rate of about 15 %.

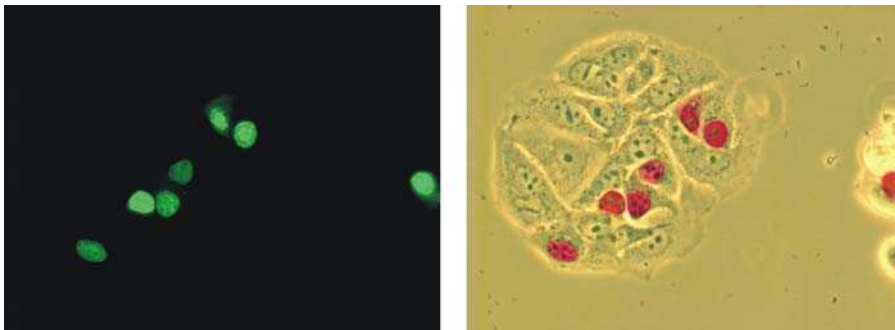
Three different cell lines were tested additionally without optimization:

In this approach the incubation time of the DNA-Lipid complex with the cells was 4 h in medium that contains serum and antibiotics. Transfection was carried out in 35 mm dishes with 2 μ g DNA (pHMGA1a-GFP) and 10 μ l METAFECTENE.

293T kidney cells: Transfection rate about **30 %**



MCF-7 human breast cancer cells: Transfection rate about **30 %**



C2C12 mouse myoblast cells; Transfection rate about **<5 %**

